

# DECATUR CAPITAL MANAGEMENT, INC. QUALITY U.S. DIVIDEND

Address: 150 E. Ponce de Leon Ave., Ste. 150  
Decatur, GA, 30030

Firm Type: Independent Reg. Inv. Advisor  
Legal Structure: Corporation  
Year Founded: 1998  
Firm GIPS Compliant: Yes  
Firm/Product Assets: \$ 150.39 Million / \$ 1.41 Million  
Firm/Product Accounts: 35 / 9  
Parent Company: none  
Investment Style: Growth  
Market Capitalization: Large Capitalization (10-50 \$Billion)  
Decision Making: --  
Portfolio Manager: Mr. Degas Wright  
Manager Tenure: --  
Mgr. Experience: --  
Product Contact: Mrs. Elizabeth Crenshaw  
Phone: 404-270-9838

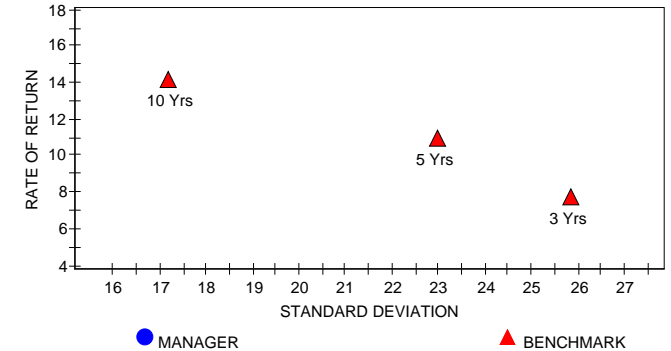
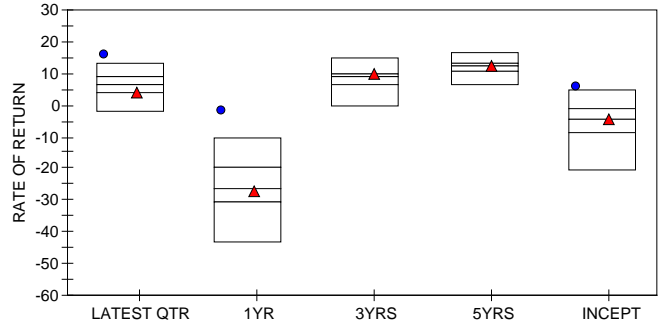
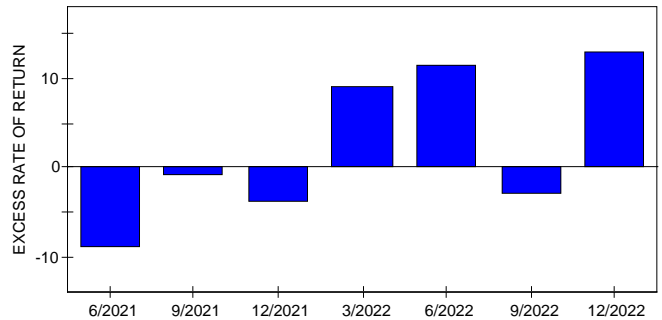
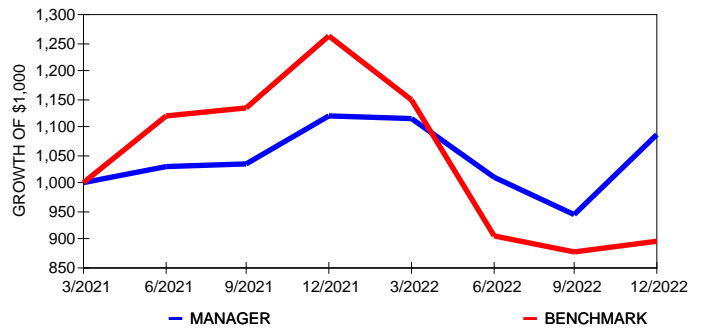
	Account Size	Annual Fees
Performance Incentive Fee:	--	US\$ 1 Mill
Individual Min Annual Fee:	--	US\$ 5 Mill
Individual Min Account Size:	--	US\$ 10 Mill
Offered As Mutual Funds:	--	US\$ 25 Mill
Offered As Commingled Funds:	--	US\$ 50 Mill
Commingled Min Annual Fee:	--	US\$ 100 Mill
Commingled Min Account Size:	--	US\$ 200 Mill

	MRQ	2022	2021	2020	2019	2018	2017	2016	2015	2014	2013	Incept
Manager	15.08	-2.78	--	--	--	--	--	--	--	--	--	4.88
Bnchmrk	2.20	-29.14	27.60	38.49	36.39	-1.51	30.21	7.08	5.67	13.05	33.48	-6.10
Excess	12.88	26.35	--	--	--	--	--	--	--	--	--	10.98
90 TBill	1.07	2.20	0.04	0.32	2.08	2.00	0.96	0.33	0.06	0.03	0.05	1.27

PERIOD	ROR	STDEV	ALPHA	BETA	RSQR	TRCKERR	SHARPE	INFORATIO
3 Yrs	--	--	--	--	--	--	--	--
4 Yrs	--	--	--	--	--	--	--	--
5 Yrs	--	--	--	--	--	--	--	--
6 Yrs	--	--	--	--	--	--	--	--
7 Yrs	--	--	--	--	--	--	--	--
8 Yrs	--	--	--	--	--	--	--	--
9 Yrs	--	--	--	--	--	--	--	--
10 Yrs	--	--	--	--	--	--	--	--
Inception	4.88	--	--	--	--	--	--	--

GICS Sector Breakdown: 12/2022	%	Equity Characteristics: 12/2022	%
Materials	5.25	Beta(5 Year)	0.88
Energy	11.77	Dividend Yield	3.95
Consumer Staples	5.11	5 Year EPS Growth	5.64
Consumer Discretionary	0.52	Price/Book	2.19
Industrials	9.41	P/E (Proj next 12 mths)	14.30
Utilities	8.90	Return on Equity	14.69
Health Care	1194.00	Market Capitalization:	
Information Technology	6.64	Wght Avg (\$ MM)	92908.00
Communication Services	7.62	Median (\$ MM)	38368.00
Financials	20.96	Debt/Equity	--
Real Estate	9.49	Active Share	92.74
Cash	2.38	Total # of Holdings	34.0
Other	--	% of Top Ten Holdings	41.55
		Ann Fiscal YTD Turnover	--
		SEC-30-Day Yield	--

Ten Largest Holdings:12/2022	%	Firm Representative Client List
ABBVIE INC.	6.3000	Undisclosed
CHEVRON CORP	6.0200	Undisclosed
INTERPUBLIC GROUP	4.4900	Undisclosed
PFIZER INC.	3.5900	--
IBM CORP	3.5000	--
NORTHWEST BANCSHARES,	3.3900	--
BROADCOM LIMITED	3.3600	--
GENERAL MILLS INC.	3.3000	--
METLIFE, INC.	3.2800	--
CITIZENS FINANCIAL GROUP	3.2200	--



PERIOD	RATE OF RETURN			GROWTH OF \$1,000		
	MANAGER	BENCHMARK	EXCESS	MANAGER	BENCHMARK	PREMIUM
1 Yr	-2.78	-29.14	26.35	\$972	\$709	\$264
2 Yrs	--	-4.91	--	--	\$904	--
3 Yrs	--	7.79	--	--	\$1,252	--
4 Yrs	--	14.32	--	--	\$1,708	--
5 Yrs	--	10.96	--	--	\$1,682	--
6 Yrs	--	13.96	--	--	\$2,190	--
7 Yrs	--	12.95	--	--	\$2,345	--
8 Yrs	--	12.01	--	--	\$2,478	--
9 Yrs	--	12.13	--	--	\$2,802	--
10 Yrs	--	14.10	--	--	\$3,740	--
Inception	4.88	-6.10	10.98	\$1,087	\$896	\$191

## DECATUR CAPITAL MANAGEMENT, INC. QUALITY U.S. DIVIDEND

<u>Equity Personnel</u>	<u>Total</u>	<u>Firm Personnel</u>	<u>Total</u>
Portfolio Managers	1	Portfolio Managers	1
Research Analysts	--	Research Analysts	1
Traders	1	Traders	1
Marketing	1	Marketing	1
Total Equity	3	Client Service	1

ORGANIZATION AND OWNERSHIP - Decatur Capital Management (DCM), Inc. was founded in June 1998 and began managing institutional assets in 2002. DCM is a registered investment advisor in the state of Georgia, a registered MWBE firm in Illinois and is registered with the SEC (since January 2006). The firm is currently 100% employee owned. The founding principals, Degas Wright, CFA and Ralph Bryant, CPA are the controlling equity owners of DCM. In 2013, equity ownership was expanded to include additional individuals. The firm currently manages Large & International equity strategies.

Offered WRAP/TAMP Program:

\*PSN is an investment manager database and is a division of Informa Investment Solutions, Inc (IIS). Reproduction of any information obtained from PSN in any form is prohibited without the written permission of Informa Investment Solutions, Inc. Performance figures shown are gross of manager fees. All rates of return over one year are annualized. The performance figures are provided from the investment management firm and are reported for informational purposes only. No representation is given with respect to their accuracy or completeness, nor that the figures are necessarily GIPS compliant, and they will be subject to change. The information provided is not intended to be a complete analysis of every material fact concerning the firm or product. Past performance does not guarantee future results. This information should not be deemed as an offer to sell or a solicitation of an offer to buy shares of products that are described herein. Index performance returns do not reflect any management fees, transaction costs or expenses. One can not invest directly in an index. Because of the possibility of human or mechanical error by IIS sources or others, IIS does not guarantee the accuracy, adequacy, completeness or availability of any information and is not responsible for any errors or omissions or for the results obtained from the use of such information. THERE ARE NO EXPRESS OR IMPLIED WARRANTIES, INCLUDING, BUT NOT LIMITED TO, WARRANTIES OF MERCHANTABILITY OR FITNESS FOR A PARTICULAR PURPOSE OR USE. In no event shall IIS be liable for any indirect, special or consequential damages in connection with use of any subset of PSN data or derived data.